

TEAMWEAR
2025



LERCHE 

CONTENTS



T-SHIRTS

AUTHENTIC CLASSIC T & LONG SLEEVE T	18
AUTHENTIC HEAVYWEIGHT T	19
PURE ORGANIC T	20

POLOS

CLASSIC POLYCOTTON POLO	24
HARDWEARING POLYCOTTON POLO	24
STRETCH POLO	25
CLASSIC COTTON POLO	26
ULTIMATE COTTON POLO	26
AUTHENTIC ECO POLO	27



SWEATSHIRTS & JOG PANTS

AUTHENTIC SWEATS	30
CLASSIC SWEATSHIRT	34
HOODED SWEATSHIRT	35
SWEAT PANTS	35

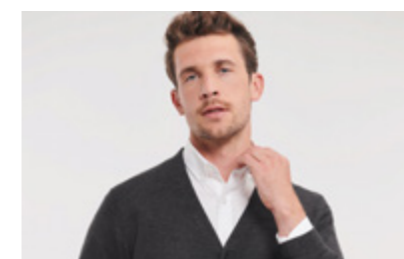
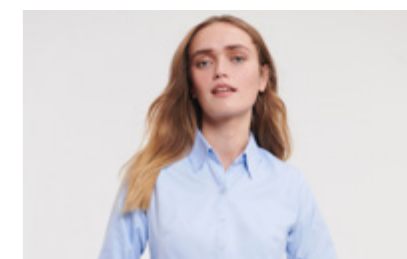


SHIRTS & BLOUSES

POLYCOTTON POPLIN SHIRT	39
STRETCH SHIRT	40
PURE COTTON POPLIN SHIRT	41
ULTIMATE STRETCH SHIRT	41
OXFORD SHIRT	43



HERRINGBONE SHIRT	47
ULTIMATE NON-IRON SHIRT	49



KNITWEAR

V-NECK KNITTED PULLOVER	52
V-NECK KNITTED CARDIGAN	52
V-NECK SLEEVELESS KNITTED PULLOVER	53

FLEECE

OUTDOOR FLEECE	55
----------------	----

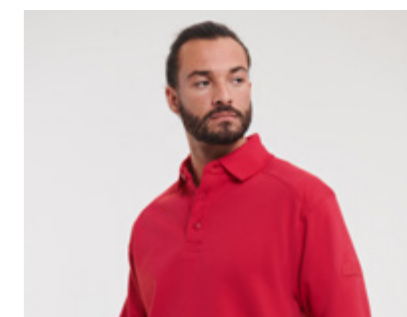


JACKETS

CROSS JACKET	58
HOODED NANO JACKET & BODYWARMER	59
BIONIC SOFTSHELL JACKET	62
SOFTSHELL JACKET & GILET	63
ESSENTIAL SOFTSHELL JACKET	65
SMART SOFTSHELL JACKET & GILET	66
SPORTSHELL 5000 JACKET	66
HYDRAPLUS 2000 JACKET	67

WORKWEAR

HEAVY DUTY WORKWEAR T	69
HEAVY DUTY COLLAR & CREW NECK WORKWEAR SWEATSHIRTS	69
WORKWEAR POLYCOTTON TWILL TROUSERS & SHORTS	70
HEAVY DUTY WORKWEAR TROUSERS	70
HEAVY DUTY WORKWEAR GILET	71



DISCOVER HOW
WE WORK

FOR A BETTER TOMORROW



CERTIFICATIONS & MEMBERSHIPS

MORE INFORMATION ON OUR WEBSITE [RUSSELLEUROPE.COM](https://www.russelleurope.com)

Safe Products



STANDARD
100

OEKO-TEX® CERTIFICATION

All our garments – whether manufactured by us or outsourced – are tested for harmful substances and certified according to STANDARD 100 by OEKO-TEX®. www.Oeko-Tex.com

Respectful Workplaces



Trade with purpose

Russell Europe is member of amfori, the leading global business association for open and sustainable trade. We improve the social performance of our supply chain via amfori BSCI. For more information visit www.amfori.org

Sustainable Sourcing



Driving awareness on environmental issues and quality are the core values of our Russell Pure Organic® products. We want to support your efforts in making the world a better place by offering eco-friendly, long lasting and fair produced clothing.

MADE IN OUR OWN FACILITIES



Unlike many other brands, Russell Europe produces the majority of its T-Shirts in its own production facilities in Morocco. We are proud to have this opportunity and to have a fantastic and dedicated team in Morocco.



FAIR COMPENSATION

We believe every worker has a right to compensation for a regular work week that is sufficient to meet the worker's basic needs and provide some discretionary income.

We believe overtime should not be required to accomplish this.

WE REACHED OUR WATER TARGET EARLY

Since 2018, we have achieved a 13.8% reduction in water intensity, or the amount of water used per pound of fabric — achieving our goal of a 10% reduction ahead of 2030.



ZERO WASTE

Our sustained commitment to waste reduction means all our facilities are zero waste. This vital achievement is made possible through a system of process optimisation at every location that looks to better utilise all fabric — from cutting patterns that minimise scraps to implementing new design software to reduce samples.



SO CLOSE

Immediate vicinity to Europe means:

- » shorter transport routes*
- » lower CO² footprint*
- » faster availability*
- » Direct container shipments to our customers

* over 80% shorter transport routes. For comparison:
Casablanca (MA) - Rotterdam (NL) approx. 3,100 km,
Chittagong (BD) - Rotterdam (NL) approx. 16,500 km,
Dalian (CN) - Rotterdam (NL) approx. 23,200 km

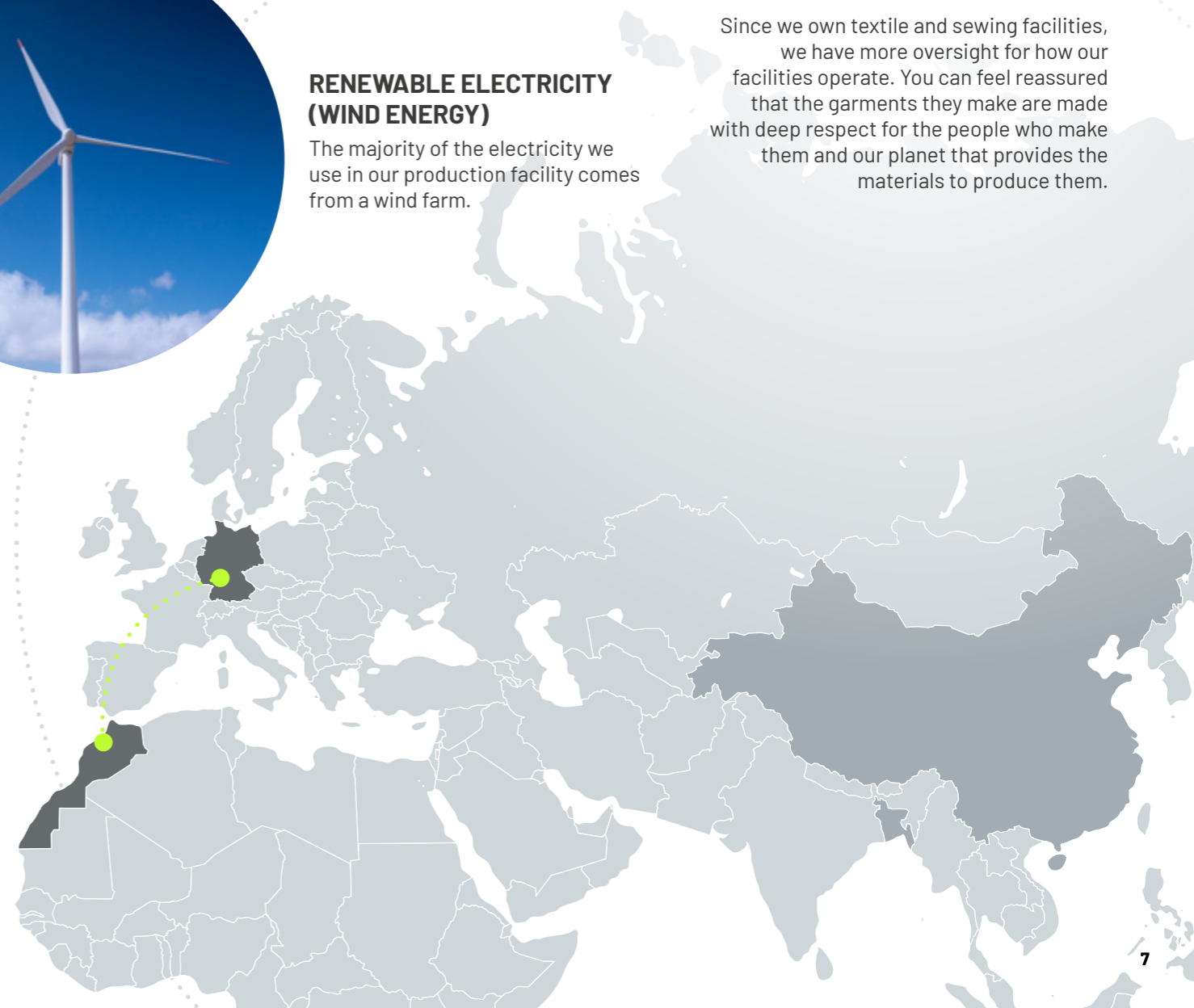


RENEWABLE ELECTRICITY (WIND ENERGY)

The majority of the electricity we use in our production facility comes from a wind farm.

CLOSE TO HOME!

Since we own textile and sewing facilities, we have more oversight for how our facilities operate. You can feel reassured that the garments they make are made with deep respect for the people who make them and our planet that provides the materials to produce them.



SOURCING & TRANSPARENCY



Everything that we do not manufacture ourselves, we source from our long-standing production partners.



SUPPLIER TRANSPARENCY

Today, we already disclose 100% of our Tier 1 suppliers, owned facilities and licensees' factories.



OUR PARTNERS

ALL OUR SUPPLIERS

- » are members of Amfori BSCI
- » produce Oeko-Tex® certified products
- » commit to adhering to our strict Code of Conduct



SOURCING DONE RIGHT

Our goal is to have full transparency on all our products right back to the raw materials. We have already mapped our cotton supply back to raw materials.

We have a commitment to map our supply chain back to raw materials by 2025. With 45% of engaged suppliers mapped to raw materials in 2022, we are on track to reach our goal.



Download Sustainability Report

**NEW
STYLE**
2025

**LADIES'
AUTHENTIC
CLASSIC T**
180F

SEE PAGE 18 FOR MORE INFORMATION



AVAILABLE IN
8 COLOURS
SIZES
XS - 2XL

CR

60

BH

FN

LX

CG

36

30



THE FAMILY IS COMPLETE!

The 180F Ladies' Authentic Classic T is our newest addition to the highly popular Authentic T-Shirt collection.

The Authentic T family is now complete, with products for ladies, men and kids, and styles from shortsleeve to longsleeve and lightweight to heavyweight.

All made from the customary premium ringspun cotton and boasting the same refined details, such as a shoulder-to-shoulder tape, 1x1 rib knit collar with single needle topstitching and a tear away label. Like all the other Authentic T-Shirt bestsellers, the Ladies' Authentic Classic T will be an instant hit with teams looking for quality and versatility.



KT
Tan

available for the
**AUTHENTIC
CLASSIC T**
180M

SEE PAGE 18 FOR
MORE INFORMATION



**NEW
COLOUR**
2025

KT
Tan

WARM AND BALANCED

TAN is a trendy safe bet



Elevate your everyday style with our new warm and versatile shade that perfectly balances casual comfort with elegance.

TAN is the ideal neutral - effortlessly complementing a wide range of outfits while adding a touch of earthy warmth to your wardrobe. The colour TAN conveys grounding and stability by evoking natural materials such as leather and wood.

TAN stands for practicality and trustworthiness. Whether you're pairing it with jeans for a laid-back look or layering it under a jacket for a more polished ensemble, a TAN T-Shirt is a must-have for those who appreciate understated sophistication.

**MEN'S AUTHENTIC
HOODED SWEAT**
265M

SEE PAGE 30 FOR MORE INFORMATION

Available for
our most popular
**AUTHENTIC
SWEATSHIRTS**

**THE AUTHENTIC
SWEAT**
262M

SEE PAGE 30 FOR MORE INFORMATION



NEW
in 2025

60
Natural

NATURALLY AUTHENTIC

*Introducing the colour NATURAL as a new option for
everybody's favourite Russell Sweatshirts!*



Perfect for people who appreciate subtle elegance in a casual garment.
The understated, soft and naturally light shade coordinates with any outfit, making it ideal
for layering or wearing on its own.

NATURAL is the perfect canvas for making decorations in bold or dark corporate and team colours stand out.
NATURAL adds a touch of sophistication to your look, making it an essential addition to your collection whether you're
creating casual sports team or corporate outfits.



THE TEAMWEAR STAPLE

From Classic T-Shirts to Pure Organic and Workwear, we have the perfect selection in brilliant colours and sizes for everyone - big or small. If you're looking for the ultimate T-Shirt, Russell Ts are the right choice for you!



AUTHENTIC CLASSIC T & CLASSIC LONG SLEEVE T

180



MATERIAL / WEIGHT

100% Ringspun Cotton
Light Oxford: 93% Cotton, 7% Viscose
White: 175g/m², Colours: 180g/m²

PACKING

Pack 12/ Carton 72
180L: Pack12/ Carton 72
180L 4XL: Carton 36

180M AUTHENTIC CLASSIC T

SIZES XS-4XL

- » Classic Fit
- » Single Jersey
- » Shoulder to shoulder neck tape

- » 1x1 rib knit collar with top stitch
- » Tubular construction



3XL & 4XL only available in Black, Bottle Green, Bright Royal, French Navy, White, Classic Red, Convo Grey, Natural, Olive, Mocha, Indigo Blue and Mineral Blue



180F LADIES' AUTHENTIC CLASSIC T

SIZES XS-2XL

- » Crew neck
- » 1x1 rib knit collar with single needle top stitching
- » Shaped side seams for a feminine fit
- » Shoulder to shoulder neck tape
- » Tear away label



180B KIDS AUTHENTIC CLASSIC T

SIZES 1-12 YEARS

- » Classic Fit
- » Single Jersey
- » Shoulder to shoulder neck tape
- » 1x1 rib knit collar with top stitch

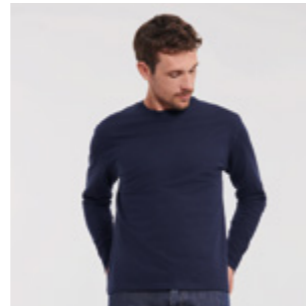
- » Name label
- » Tubular construction



180L AUTHENTIC CLASSIC LONG SLEEVE T

SIZES XS-4XL

- » Classic Fit
- » Single Jersey
- » Shoulder to shoulder neck tape
- » 1x1 rib knit collar with top stitch
- » Tubular construction



AUTHENTIC HEAVYWEIGHT T

215



MATERIAL / WEIGHT

100% Combed Ringspun Cotton
White: 210g/m², Colours: 215g/m²

PACKING

Pack 12/ Carton 72

NEW NAME!

215M AUTHENTIC HEAVYWEIGHT T

SIZES S-2XL

- » Classic Fit
- » Single Jersey
- » Shoulder to shoulder neck tape

- » 1x1 rib knit collar with top stitch
- » Tubular construction



PURE ORGANIC T

108



MATERIAL / WEIGHT

100% Combed Ringspun Cotton (organic) Light Oxford: 97% Combed Ringspun Cotton (organic), 3% Viscose
160g/m²

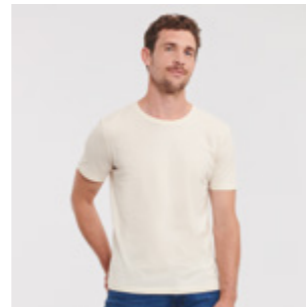
PACKING

Pack 12/ Carton 72

108M MEN'S PURE ORGANIC T SIZES XS-3XL

- » Contemporary shaped fit
- » Single Jersey
- » Custom-developed shoulder to shoulder tape offering greater stability and an elegant look
- » Label free: Small size label in the neck (incl. product number)

- » Narrow collar band with LYCRA®
- » Comfortable cool and light texture
- » Smooth surface for best print results



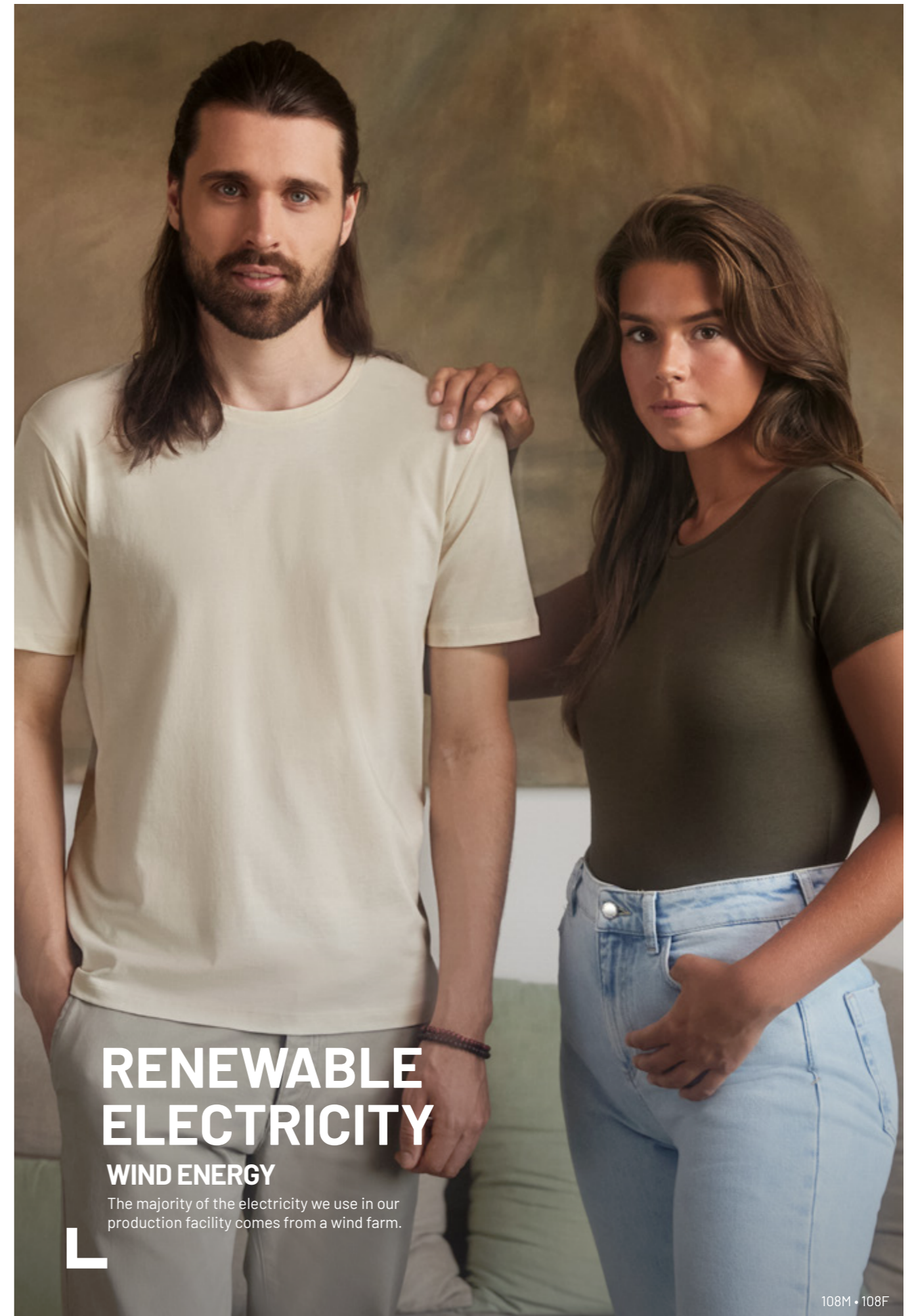
108F LADIES' PURE ORGANIC T SIZES XS-2XL

- » Contemporary shaped fit
- » Single Jersey
- » Custom-developed shoulder to shoulder tape offering greater stability and an elegant look
- » Label free: Small size label in the neck (incl. product number)

- » Narrow collar band with LYCRA®
- » Comfortable cool and light texture
- » Smooth surface for best print results



108M • 108F



RENEWABLE ELECTRICITY WIND ENERGY

The majority of the electricity we use in our production facility comes from a wind farm.

108M • 108F



SPORTINESS MEETS ELEGANCE

Its success story is no surprise.

Light and durable yet elegant without being overdressed, a polo shirt is a true all-rounder and a score for any team outfit.



CLASSIC POLYCOTTON POLO

539



MATERIAL / WEIGHT

65% Polyester, 35% Ringspun Cotton
White: 210g/m², Colours: 215g/m²

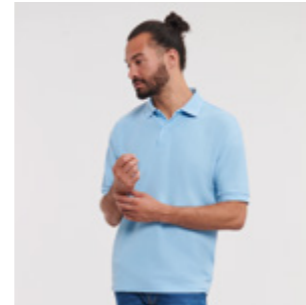
PACKING

Pack 6/ Carton 36

539M MEN'S CLASSIC POLYCOTTON POLO

SIZES XS-6XL

- » Classic Fit
- » Fine honeycomb pique structure
- » Double yarn construction
- » Reinforced shoulder seams with neck tape
- » Classic style flat knit cuffs
- » Twin needle hem at bottom for added stability



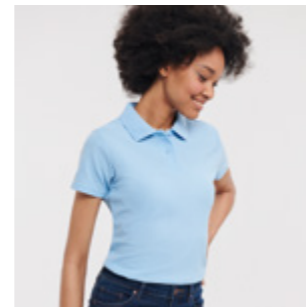
3XL-4XL only available in Bottle Green, Black, Bright Royal, Classic Red, French Navy, Light Oxford and White. 5XL & 6XL only available in Black, Bright Royal, French Navy and White



539F LADIES' CLASSIC POLYCOTTON POLO

SIZES XS-4XL

- » Classic Fit
- » Fine honeycomb pique structure
- » Double yarn construction
- » Reinforced shoulder seams with neck tape
- » Open sleeve with twin needle hem
- » Twin needle hem at bottom for added stability



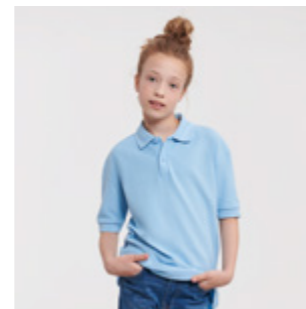
3XL & 4XL only available in Bottle Green, Bright Royal and French Navy



539B KIDS CLASSIC POLYCOTTON POLO

SIZES 1-12 YEARS

- » Classic Fit
- » Fine honeycomb pique structure
- » Double yarn construction
- » Reinforced shoulder seams with neck tape
- » Classic style flat knit cuffs
- » Name label
- » Twin needle hem at bottom for added stability



HARDWEARING POLYCOTTON POLO

599



MATERIAL / WEIGHT

65% Polyester, 35% Ringspun Cotton
White: 210g/m², Colours: 215g/m²

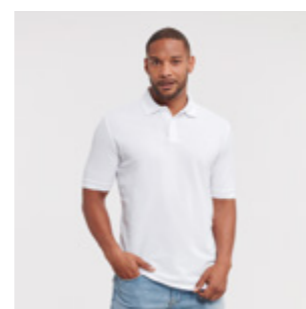
PACKING

Pack 6/ Carton 36

599M HARDWEARING POLYCOTTON POLO

SIZES XS-6XL

- » Classic fit with side vents
- » Side vents for ease of fit
- » Reinforced shoulder seams with neck tape
- » Flat knit collar and cuffs with double ripple effect
- » Twin needle hem at bottom for added stability



5XL & 6XL only available in Black, Bottle Green, Bright Royal, French Navy and White



STRETCH POLO

566



MATERIAL / WEIGHT

95% Combed Ringspun Cotton; 5% LYCRA® Light Oxford; 88% Combed Ringspun Cotton, 7% Viscose, 5% LYCRA®; White: 205g/m², Colours: 210g/m²

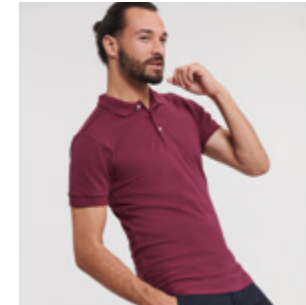
PACKING

Pack 6/ Carton 36

566M MEN'S FITTED STRETCH POLO

FIT FITTED • SIZES S-3XL

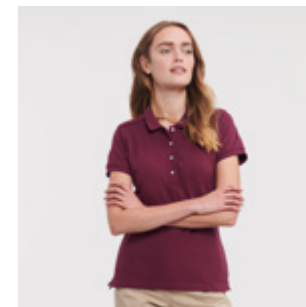
- » Slim leaf collar
- » Ribbed cuffs
- » Strip of self-colour fabric along shoulder seam
- » Shorter side vents with herringbone tape
- » Soft handfeel
- » Contrast buttons



566F LADIES' FITTED STRETCH POLO

FIT FITTED • SIZES XS-2XL

- » Slim leaf collar
- » Ribbed cuffs
- » Strip of self-colour fabric along shoulder seam
- » Shorter side vents with herringbone tape
- » Soft handfeel
- » Slimmer, 4 button placket
- » Contrast buttons



566M • 566F

CLASSIC COTTON POLO

569



MATERIAL / WEIGHT

100% Ringspun Cotton
White: 195g/m², Colours: 200g/m²

PACKING

Pack 6/ Carton 36

569M MEN'S CLASSIC COTTON POLO

SIZES XS-4XL

- » Classic fit with side vents
- » Side vents for ease of fit
- » Reinforced shoulder seams with neck tape
- » Classic style flat knit cuffs

- » Twin needle hem at bottom for added stability



XS only available in French Navy and White. 3XL & 4XL only available in Black, French Navy and White



ULTIMATE COTTON POLO

577



MATERIAL / WEIGHT

100% Combed Ringspun Cotton
White: 210g/m², Colours: 215g/m²

PACKING

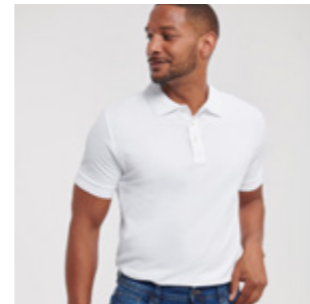
Pack 6/ Carton 36

577M MEN'S ULTIMATE COTTON POLO

SIZES XS-4XL

- » Classic Fit
- » Contemporary cut
- » Fine honeycomb pique structure
- » Reinforced shoulder seams with herringbone neck tape

- » Side vents with internal herringbone taping for added stability and better fit
- » Classic style flat knit cuffs
- » Pre-shrunk and suitable for wash up to 60°C



RUSSELL STANDS FOR QUALITY AND SUSTAINABILITY.

The most sustainable products are the ones you don't have to keep replacing.

577M

AUTHENTIC ECO POLO

570



MATERIAL / WEIGHT

65% Polyester (recycled),
35% Ringspun Cotton
White: 170 g/m², Colours: 180 g/m²

PACKING

Pack 6/ Carton 36

570M AUTHENTIC ECO POLO

SIZES XS-3XL

- » Classic Fit
- » Tear-Away label
- » Dyed-to-match buttons
- » 2-button placket
- » Reinforced shoulder seams with neck tape



The Authentic Eco Polo comes in a wide range of 9 colours to complement any outfit, including Petrol Blue, which is only available for the Authentic Eco Polo!

Made from recycled polyester and cotton and being produced with short transport routes in our own facilities in Morocco, the Authentic Eco Polo is our most sustainable polo yet!

570M

OUR INVENTION THAT STARTED IT ALL

When Benjamin Russell introduced his design for an all cotton sweater, he pioneered sports teamwear forever. This original spirit of the sweatshirt remains a key moment in team culture.



AUTHENTIC SWEATS

262·265·266·267·270·268



MATERIAL / WEIGHT
80% Combed Ringspun Cotton, 20% Polyester 100% cotton face yarn (3-thread-construction) 280g/m²

PACKING
Pack 3/ Carton 24
Pack 6/ Carton 36 (262M)

262M THE AUTHENTIC SWEAT SIZES XS-5XL

- » Straighter cut for a modern look
- » 100% cotton face yarn provides the best surface for decoration

- » Herringbone neck tape for comfort and stability
- » Side seams improve fit



4XL only available in Black, French Navy, Light Oxford and Convoy Grey
5XL only available for Black and French Navy



265M MEN'S AUTHENTIC HOODED SWEAT SIZES XS-5XL

- » Straighter cut for a modern look
- » 100% cotton face yarn provides the best surface for decoration
- » Flat, chunky drawcords

- » Double layer hood with cover seam drawcord channel
- » Kangaroo pockets



4XL only available in Black, French Navy, Light Oxford and Convoy Grey
5XL only available for Black and French Navy



265F LADIES' AUTHENTIC HOODED SWEAT SIZES XS-2XL

- » Modern feminine tailored fit
- » 100% cotton face yarn provides the best surface for decoration
- » Slimmer shoulders and leaner arms
- » Flat, chunky drawcords

- » Double layer hood with cover seam drawcord channel
- » Kangaroo pockets



2XL only available in Black, French Navy and Light Oxford



265B KIDS AUTHENTIC HOODED SWEAT SIZES 3-14 YEARS

- » Straighter cut for a modern look
- » 100% cotton face yarn provides the best surface for decoration
- » Flat, chunky drawcords
- » Double layered hood
- » Kangaroo pockets

- » No drawcords



268M MEN'S AUTHENTIC JOG PANTS SIZES S-2XL

- » Contemporary fit and modern design
- » 100% cotton face yarn provides the best surface for decoration
- » Self-fabric welt pockets with concealed zip fastening
- » Back patch pocket

- » Flat, chunky drawcords
- » Rib at cuff and waistband



262M · 265M

266M MEN'S AUTHENTIC ZIPPED HOOD JACKET

SIZES XS-5XL

- » Straighter cut for a modern look
- » 100% cotton face yarn provides the best surface for decoration
- » Flat, chunky drawcords
- » Side seam pockets
- » YKK Metal (Antique Silver) Full Zipper
- » Kissing (covered) zip for full cross body decoration
- » Double layer hood with cover seam drawcord channel

4XL only available in Black, French Navy, Light Oxford and Convo Grey
5XL only available for Black and French Navy



266F LADIES' AUTHENTIC ZIPPED HOOD JACKET

SIZES XS-2XL

- » Modern feminine tailored fit
- » 100% cotton face yarn provides the best surface for decoration
- » Flat, chunky drawcords
- » Double layer hood with cover seam drawcord channel
- » Side seam pockets
- » YKK Metal (Antique Silver) Full Zipper
- » Kissing (covered) zip for full cross body decoration

2XL only available in Black, French Navy and Light Oxford



266B KIDS AUTHENTIC ZIPPED HOOD JACKET

SIZES 3-14 YEARS

- » Straighter cut for a modern look
- » 100% cotton face yarn provides the best surface for decoration
- » No drawcords
- » Double layered hood
- » Side seam pockets
- » YKK Metal (Antique Silver) Full Zipper
- » Kissing (covered) zip for full cross body decoration
- » Top stitching for a greater seam resistance



267M MEN'S AUTHENTIC SWEAT JACKET

SIZES XS-4XL

- » Straighter cut for a modern look
- » 100% cotton face yarn provides the best surface for decoration
- » Herringbone neck tape for comfort and stability
- » Side seam pockets
- » Welt pocket workmanship for a smooth and soft pocket entry
- » Self-fabric cadet collar
- » YKK Metal (Antique Silver) Full Zipper

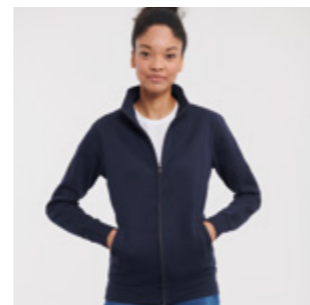
4XL only available in Black, French Navy and Light Oxford



267F LADIES' AUTHENTIC SWEAT JACKET

SIZES XS-XL

- » Modern feminine tailored fit
- » 100% cotton face yarn provides the best surface for decoration
- » Herringbone neck tape for comfort and stability
- » Side seam pockets
- » Welt pocket workmanship for a smooth and soft pocket entry
- » Self-fabric cadet collar
- » YKK Metal (Antique Silver) Full Zipper



270M AUTHENTIC QUARTER ZIP SWEAT

SIZES XS-4XL

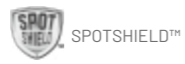
- » 100% cotton face yarn provides the best surface for decoration
- » Herringbone neck tape for comfort and stability with front facing shoulder seams
- » Brushed fleece
- » Kissing (covered) zip for full cross body decoration
- » Self-fabric cadet collar
- » YKK Metal (Antique Silver) ¼ zip



262M • 265M • 266F

CLASSIC SWEATSHIRT

762



MATERIAL / WEIGHT
50% Combed Ringspun Cotton, 50% Polyester
295g/m²

PACKING
Pack 6/ Carton 36

762M CLASSIC SWEATSHIRT SIZES XS-4XL

- » SpotShield™ stain resistant coating
- » Tubular body construction for added stability
- » Herringbone neck tape for comfort
- » Raglan sleeve
- » 1x1 rib trim with elastane on hem and cuffs



3XL & 4XL only available in Bright Royal, Bottle Green and French Navy



762B KIDS CLASSIC SWEATSHIRT SIZES 1-12 YEARS

- » SpotShield™ stain resistant coating
- » Tubular body construction for added stability
- » Herringbone neck tape for comfort
- » Raglan sleeve
- » 1x1 rib trim with elastane on hem and cuffs
- » Name label



762M

HOODED SWEATSHIRT

575



MATERIAL / WEIGHT
50% Combed Ringspun Cotton, 50% Polyester
295g/m²

PACKING
Pack 6/ Carton 24

575M HOODED SWEATSHIRT SIZES XS-2XL

- » Straighter cut for a modern look
- » Herringbone neck tape for comfort and stability
- » Double layer hood with cover seam drawcord channel
- » shoulders and leaner arms
- » Flat, chunky drawcords
- » Kangaroo pocket with bartacks



575B KIDS HOODED SWEATSHIRT SIZES 3-12 YEARS

- » Straighter cut for a modern look
- » Herringbone neck tape for comfort and stability
- » Double layer hood with cover seam drawcord channel
- » Slimmer shoulders and leaner arms
- » No drawcord in line with health and safety legislation
- » Kangaroo pocket with bartacks



SWEAT PANTS

750



MATERIAL / WEIGHT
50% Combed Ringspun Cotton, 50% Polyester
295g/m²

PACKING
Pack 6/ Carton 36

750B KIDS SWEAT PANTS SIZES 3-12 YEARS

- » Elasticated waistband and leg ends
- » Side pockets
- » No drawcord in line with health and safety legislation



575M

SHIRTS & BLOUSES

**FROM RUGGED BUSINESS CASUAL TO SMART
LOOKS AND FORMAL STYLES**

Russell Shirts and Blouses cover the full range of needs as diverse
as the whole of your team.





POPLIN SHIRTS

The perfect blend of elegance and versatility, our Poplin shirts are crafted to deliver timeless style and exceptional comfort for any occasion.

POLYCOTTON POPLIN SHIRT

934·935·924



EC Easy Care

MATERIAL / WEIGHT
65% Polyester, 35% Cotton Poplin
White: 110g/m², Colours: 105g/m²

PACKING
Pack 1/ Carton 12

934M MEN'S LONG SLEEVE CLASSIC POLYCOTTON POPLIN SHIRT FIT CLASSIC · SIZES S-4XL

- » Easy Care
- » Left chest pocket
- » Curved hem
- » Stiffened Kent boned collar
- » Back yoke with 2 side pleats
- » Rounded 2 button adjustable cuffs



934F LADIES' LONG SLEEVE CLASSIC POLYCOTTON POPLIN SHIRT FIT CLASSIC · SIZES XS-4XL

- » Easy Care
- » Left chest pocket
- » Curved hem
- » Classic Collar
- » Rounded 2 button adjustable cuffs



935M MEN'S SHORT SLEEVE CLASSIC POLYCOTTON POPLIN SHIRT FIT CLASSIC · SIZES S-4XL

- » Easy Care
- » Left chest pocket
- » Curved hem
- » Stiffened Kent boned collar
- » Back yoke with 2 side pleats



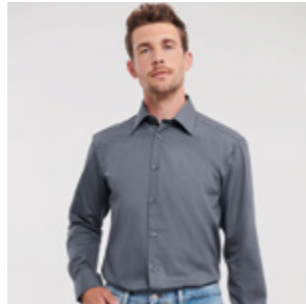
935F LADIES' SHORT SLEEVE CLASSIC POLYCOTTON POPLIN SHIRT FIT CLASSIC · SIZES XS-4XL

- » Easy Care
- » Left chest pocket
- » Curved hem
- » Classic Collar



924M MEN'S LONG SLEEVE TAILORED POLYCOTTON POPLIN SHIRT
FIT TAILORED • SIZES S-4XL

- » Easy Care
- » Curved hem
- » Stiffened Kent boned collar
- » Rounded 2 button adjustable cuffs with option for cuff links



924F LADIES' LONG SLEEVE FITTED POLYCOTTON POPLIN SHIRT
FIT FTTED • SIZES XS-4XL

- » Easy Care
- » Curved hem
- » Stylish yoke design
- » Concealed placket
- » Darts on bust, front hem and back panel for fitted shape
- » Decorative top stitch on darts
- » Rounded double buttoned cuffs



STRETCH SHIRT
946-947



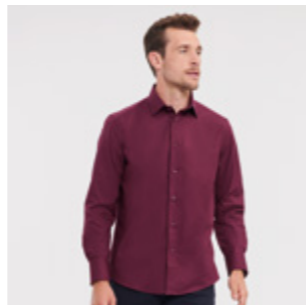
EC Easy Care

MATERIAL / WEIGHT
97% Cotton, 3% Elastane Poplin
140g/m²

PACKING
Pack 1/ Carton 12

946M MEN'S LONG SLEEVE FITTED STRETCH SHIRT
FIT FITTED • SIZES S-4XL

- » Easy Care
- » Curved hem
- » Stiffened New Kent boned collar
- » Mitred double buttoned cuffs



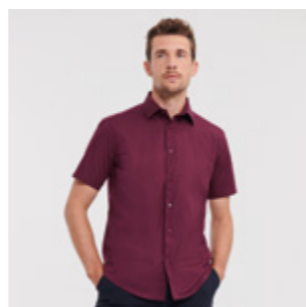
946F LADIES' 3/4 SLEEVE FITTED STRETCH SHIRT
FIT FITTED • SIZES XS-2XL

- » Easy Care
- » Curved hem
- » Darts on bust front hem and back panel for fitted shape
- » Stylish elbow length ¾ sleeve with split cuffs



947M MEN'S SHORT SLEEVE FITTED STRETCH SHIRT
FIT FITTED • SIZES S-4XL

- » Easy Care
- » Curved hem
- » Stiffened New Kent boned collar



PURE COTTON POPLIN SHIRT
936



EC Easy Care

MATERIAL / WEIGHT
100% Cotton Poplin
White: 120g/m², Colours: 125g/m²

PACKING
Pack 1/ Carton 12

936M MEN'S LONG SLEEVE CLASSIC PURE COTTON POPLIN SHIRT
FIT CLASSIC • SIZES S-4XL

- » Easy Care
- » Left chest pocket
- » Classic Kent boned collar
- » Back yoke with 2 side pleats
- » Rounded 2 button adjustable cuffs
- » Straight hem



936F LADIES' LONG SLEEVE CLASSIC PURE COTTON POPLIN SHIRT
FIT CLASSIC • SIZES XS-4XL

- » Easy Care
- » Left chest pocket
- » Classic Collar
- » Rounded 2 button adjustable cuffs
- » Curved hem



ULTIMATE STRETCH SHIRT
960



EC Easy Care

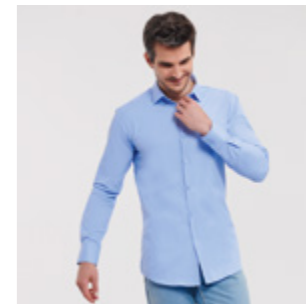


MATERIAL / WEIGHT
75% Cotton, 25% Elastomultiester (LYCRA® T400® fibre) Poplin
White: 125g/m², Colours: 130g/m²

PACKING
Pack 1/ Carton 12

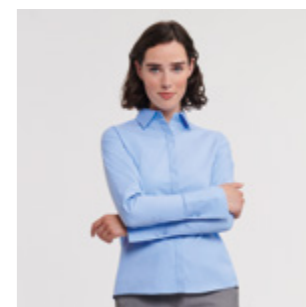
960M MEN'S LONG SLEEVE FITTED ULTIMATE STRETCH SHIRT
FIT FITTED • SIZES S-4XL

- » Easy Care, durable fabric and longer fit
- » Excellent shape retention for a lasting fit
- » Moisture management for cool comfort
- » Stiffened New Kent boned collar
- » Square edged 2 button adjustable cuffs, with option for cuff links



960F LADIES' LONG SLEEVE FITTED ULTIMATE STRETCH SHIRT
FIT FITTED SIZES XS-4XL

- » Easy Care, durable fabric and longer fit
- » Excellent shape retention for a lasting fit
- » Moisture management for cool comfort
- » Neat modern collar
- » Princess cut
- » Cocktail cuffs with 2 button fastening with extended gauntlet





OXFORD SHIRTS

Our Oxford range allows everyone to look their best while presenting a smart and consistent appearance.

OXFORD SHIRT 922·923·932·933



EC Easy Care

MATERIAL / WEIGHT
70% Cotton, 30% Polyester Oxford
White: 130g/m², Colours: 135g/m²

PACKING
Pack 1/ Carton 12

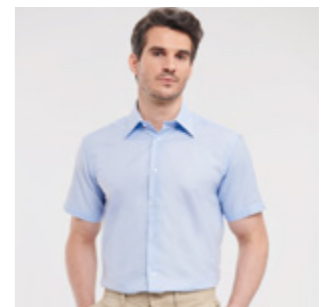
922M MEN'S LONG SLEEVE TAILORED OXFORD SHIRT FIT TAILORED · SIZES S-4XL

- » Easy Care
- » Curved hem
- » Stiffened Kent boned collar
- » Rounded 2 button adjustable cuffs, with option for cuff links



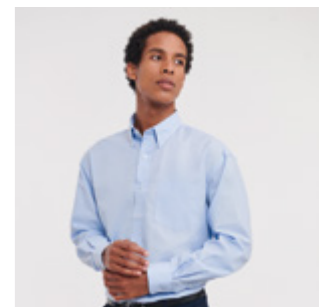
923M MEN'S SHORT SLEEVE TAILORED OXFORD SHIRT FIT TAILORED · SIZES S-4XL

- » Easy Care
- » Curved hem
- » Stiffened Kent boned collar



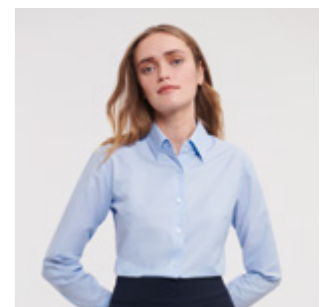
932M MEN'S LONG SLEEVE CLASSIC OXFORD SHIRT FIT CLASSIC · SIZES S-6XL

- » Easy Care
- » Curved hem
- » Button down collar
- » Back yoke with 2 side pleats
- » Left chest pocket
- » Rounded 2 button adjustable cuffs



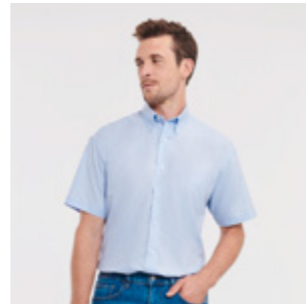
932F LADIES' LONG SLEEVE TAILORED OXFORD SHIRT FIT TAILORED · SIZES XS-6XL

- » Easy Care
- » Curved hem
- » 2 button collar stand with classic shaped collar
- » Darts at bustline and back for tailored fit
- » Rounded 2 button adjustable cuffs



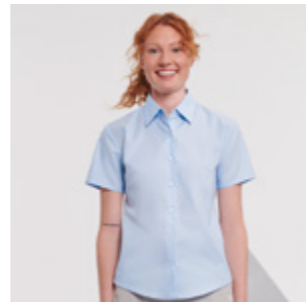
933M MEN'S SHORT SLEEVE CLASSIC OXFORD SHIRT
FIT CLASSIC • SIZES S-6XL

- » Easy Care
- » Curved hem
- » Button down collar
- » Back yoke with 2 side pleats
- » Left chest pocket



933F LADIES' SHORT SLEEVE TAILORED OXFORD SHIRT
FIT TAILORED • SIZES XS-6XL

- » Easy Care
- » Curved hem
- » 2 button collar stand with classic shaped collar
- » Darts at bustline and back for tailored fit



933M



933F



922M • 932F



HERRINGBONE SHIRTS

Our Herringbone shirt is versatile and hard-wearing, providing you with the ideal combination of style and durability.

HERRINGBONE SHIRT

964 · 962 · 963



MATERIAL / WEIGHT

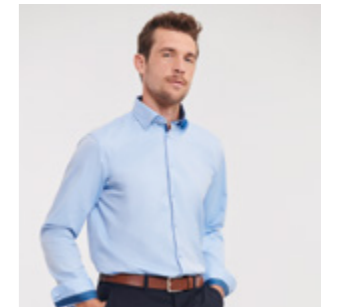
84% Cotton, 16% Polyester Herringbone
White: 125g/m², Colours: 130g/m²

PACKING

Pack 1/ Carton 12

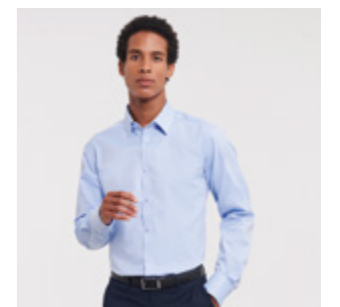
964M MEN'S LONG SLEEVE TAILORED CONTRAST HERRINGBONE SHIRT FIT TAILORED · SIZES S-4XL

- » Easy Care
- » Longer fit and Narrow placket
- » Curved hem
- » Under-Button-Down collar
- » Fashionable contrasts: cuffs (inside), collar (inside) with contrast piping
- » Contrasting colours at cuff buttonhole and lowest buttonhole
- » Darts at back improve fit



962M MEN'S LONG SLEEVE TAILORED HERRINGBONE SHIRT FIT TAILORED · SIZES S-4XL

- » Easy Care
- » Longer fit
- » Narrow placket
- » No show through
- » Curved hem
- » Stiffened Kent boned collar
- » Rounded 2 button adjustable cuffs, with option for cuff links



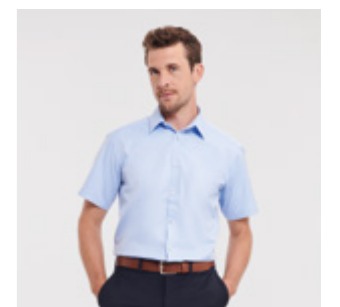
962F LADIES' LONG SLEEVE TAILORED HERRINGBONE SHIRT FIT TAILORED · SIZES XS-4XL

- » Easy Care
- » Longer fit
- » Narrow placket
- » No show through
- » Curved hem
- » Neat modern collar
- » Darts at chest, front and back hem
- » Stylish, narrow cuffs with single button fastening



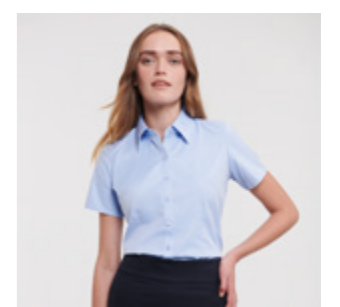
963M MEN'S SHORT SLEEVE TAILORED HERRINGBONE SHIRT FIT TAILORED · SIZES S-4XL

- » Easy Care
- » Longer fit
- » Narrow placket
- » No show through
- » Curved hem
- » Stiffened Kent boned collar



963F LADIES' SHORT SLEEVE TAILORED HERRINGBONE SHIRT FIT TAILORED · SIZES XS-4XL

- » Easy Care
- » Longer fit
- » Narrow placket
- » No show through
- » Curved hem
- » Neat modern collar
- » Darts at chest, front and back hem





ULTIMATE NON-IRON SHIRTS

Experience the luxury of our top-of-the-range premium shirt. With a refined and elegant contemporary design, crafted from high-quality compact cotton, we have created a truly non-iron garment.

ULTIMATE NON-IRON SHIRT

956·957·958

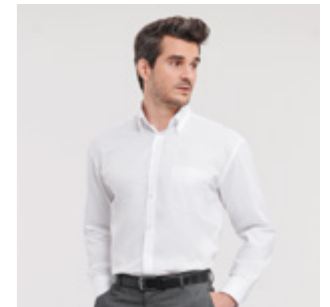


MATERIAL / WEIGHT
100% Cotton Micro Twill
120g/m²

PACKING
Pack 1/ Carton 12

956M MEN'S LONG SLEEVE CLASSIC ULTIMATE NON-IRON SHIRT FIT CLASSIC · SIZES S-4XL

- » Easy Care
- » Non-iron
- » Curved hem
- » Button down collar
- » Back yoke with 2 side pleats
- » Left chest pocket
- » Contemporary size mitred cuffs, adjustable with two buttons and with option for cuff links



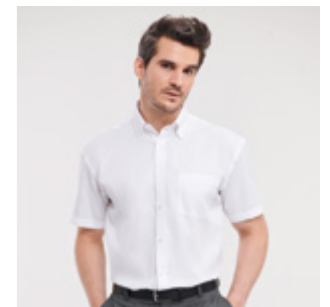
956F LADIES' LONG SLEEVE TAILORED ULTIMATE NON-IRON SHIRT FIT TAILORED · SIZES XS-4XL

- » Easy Care
- » Non-iron
- » Curved hem
- » Stylish and relaxed long edged collar
- » Twin button fastening
- » Cocktail cuffs with single button fastening with extended gauntlet and option for cuff links



957M MEN'S SHORT SLEEVE CLASSIC ULTIMATE NON-IRON SHIRT FIT CLASSIC · SIZES S-4XL

- » Easy Care
- » Non-iron
- » Curved hem
- » Button down collar
- » Back yoke with 2 side pleats
- » Left chest pocket



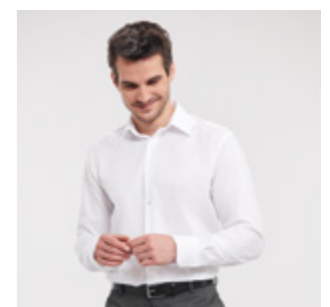
957F LADIES' SHORT SLEEVE TAILORED ULTIMATE NON-IRON SHIRT FIT TAILORED · SIZES XS-4XL

- » Easy Care
- » Non-iron
- » Curved hem
- » Stylish and relaxed long edged collar
- » Twin button fastening



958M MEN'S LONG SLEEVE TAILORED ULTIMATE NON-IRON SHIRT FIT TAILORED · SIZES S-4XL

- » Easy Care
- » Non-iron
- » Curved hem
- » Stiffened Kent boned collar
- » Stylish, mitred cuffs, adjustable with two buttons and option for cuff links



MODERN CLASSICS

Stylish layering is what our timeless and easy care knitwear was made for.

KNITWEAR



V-NECK KNITTED PULLOVER

710



EC Easy Care

MATERIAL / WEIGHT

50% Cotton, 50% Acrylic CottonBlend
275g/m²

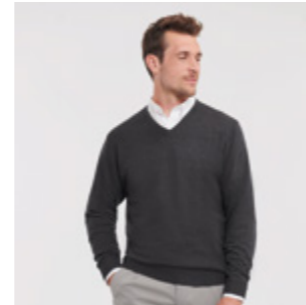
PACKING

Pack 1/ Carton 12

710M MEN'S V-NECK KNITTED PULLOVER

SIZES **XXS-4XL**

- » Classic Fit
- » Contemporary styling
- » Fully fashioned
- » Elastane on ribbed cuffs and waistband trim to retain shape and smart appearance
- » Quick to dry and Easy care



710F LADIES' V-NECK KNITTED PULLOVER

SIZES **XXS-4XL**

- » Classic Fit
- » Contemporary styling
- » Fully fashioned
- » Elastane on ribbed cuffs and waistband trim to retain shape and smart appearance
- » Quick to dry and Easy care



V-NECK KNITTED CARDIGAN

715



EC Easy Care

MATERIAL / WEIGHT

50% Cotton, 50% Acrylic CottonBlend
275g/m²

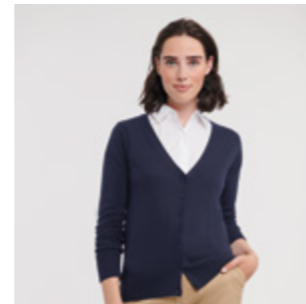
PACKING

Pack 1/ Carton 12

715F LADIES' V-NECK KNITTED CARDIGAN

SIZES **XXS-4XL**

- » Classic Fit
- » Contemporary styling
- » Fully fashioned
- » Elastane on ribbed cuffs and waistband trim to retain shape and smart appearance
- » Quick to dry and Easy care
- » Dyed-to-match buttons



V-NECK SLEEVELESS KNITTED PULLOVER

716



EC Easy Care

MATERIAL / WEIGHT

50% Cotton, 50% Acrylic CottonBlend
275g/m²

PACKING

Pack 1/ Carton 12

716M V-NECK SLEEVELESS KNITTED PULLOVER

SIZES **XXS-4XL**

- » Classic Fit
- » Contemporary styling
- » Fully fashioned
- » Elastane on ribbed cuffs and waistband trim to retain shape and smart appearance
- » Refined button up fastening with inside facing and dyed-to-match buttons
- » Quick to dry and Easy care



710M



710F

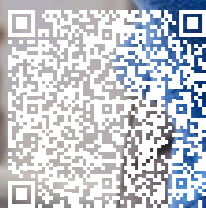


716M



THE LIGHT LAYER

For extra warmth in winter, crisp spring days, chilli summer evenings or misty autumn days. Fleece is a team mate with you all year long.



OUTDOOR FLEECE

872·870·874



MATERIAL / WEIGHT
100% Polyester Anti-Pill Fleece
320g/m²

PACKING
Pack 3/ Carton 24

872M MEN'S OUTDOOR FLEECE GILET
SIZES XS-2XL

- » Cadet collar
- » Side pockets with inside-out zips and inner mesh lining
- » Cord pulls on all zips
- » Side panel construction for modern fit
- » Bungee cord in hem



870M MEN'S FULL ZIP OUTDOOR FLEECE
SIZES XS-4XL

- » Cadet collar
- » Side pockets with inside-out zips and inner mesh lining
- » Cord pulls on all zips
- » Side panel construction for modern fit
- » Bungee cord in hem



870F LADIES' FULL ZIP OUTDOOR FLEECE
SIZES XS-2XL

- » Cadet collar
- » Side pockets with inside-out zips and inner mesh lining
- » Cord pulls on all zips
- » Side panel construction for modern fit
- » Bungee cord in hem

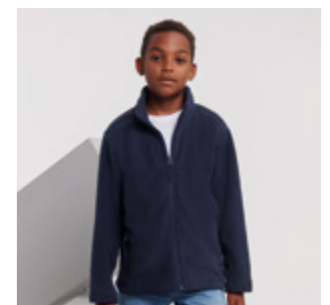


870B KIDS FULL ZIP OUTDOOR FLEECE
SIZES 3-12 YEARS

- » Cadet collar
- » Side pockets with inside-out zips and inner mesh lining
- » Cord pulls on all zips
- » Side panel construction for modern fit



» No drawcord in line with health and safety legislation



874M QUARTER ZIP OUTDOOR FLEECE
SIZES XS-2XL

- » Cadet collar
- » Side pockets with inside-out zips and inner mesh lining
- » Cord pulls on all zips
- » Side panel construction for modern fit
- » Bungee cord in hem



INSULATED JACKETS

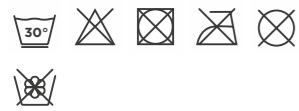


THE STRONG PLAYER

Insulated Jackets boast a modern design and environmentally friendly features, such as the sustainable Dupont™ Sorona® padding.



CROSS JACKET 430



Breathable
up to 2000g/m² per 24 hours
 Windproof

MATERIAL / WEIGHT
100% Polyester
125g/m²

PACKING
Pack 1/ Carton 12

430M MEN'S CROSS JACKET SIZES S-4XL

- » Contemporary shaped fit
- » High performance DWR fabric treated with Aquapel™ by Nanotex®
- » Fluorine and PFC free
- » Eco-efficient padding by Dupont™ Sorona®

- » Stand up collar with 2 snap fastener and inner storm flap to ward off wind and draught
- » Zipped inside pocket
- » Decorative sleeve flap with snap fastener
- » Discreet decoration access at inner left chest



36 FN

HOODED NANO JACKET & BODYWARMER 440-441



Breathable
up to 2000g/m² per 24 hours
 Windproof

MATERIAL / WEIGHT
100% Polyester
66g/m²

PACKING
Pack 1/ Carton 12

440M MEN'S HOODED NANO JACKET SIZES S-4XL

- » High performance DWR fabric treated with Aquapel™ by Nanotex®
- » Fluorine and PFC free
- » Eco-efficient padding by Dupont™ Sorona®
- » Contrasting zips, lining and accents for a refined look

- » Discreet decoration access at inner left chest
- » Stretch binding at sleeves and hem
- » Adjustable 3-parted removable hood



36 IR DO FN

441M MEN'S NANO BODYWARMER SIZES S-4XL

- » High performance DWR fabric treated with Aquapel™ by Nanotex®
- » Fluorine and PFC free
- » Eco-efficient padding by Dupont™ Sorona®
- » Contrasting zips, lining and accents for a refined look

- » Discreet decoration access at inner left chest
- » Adjustable hem with bungee cord



36 IR DO FN

441F LADIES' NANO BODYWARMER SIZES XS-3XL

- » High performance DWR fabric treated with Aquapel™ by Nanotex®
- » Fluorine and PFC free
- » Eco-efficient padding by Dupont™ Sorona®
- » Contrasting zips, lining and accents for a refined look

- » Discreet decoration access at inner left chest
- » Adjustable hem with bungee cord



36 IR DO FN

SUSTAINABLE SOURCING

Sorona® is 37% plant based.



441F

SOFTSHELL JACKET

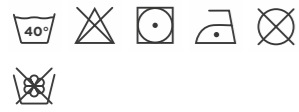
A RELIABLE TEAM MATE

Smart, functional details for travelling and workwear needs, combined with modern fabric technology and contemporary fits.



BIONIC SOFTSHELL JACKET

410



Breathable
up to 5000g/m² per 24 hours

Windproof

Waterproof material
up to 5000mm

MATERIAL / WEIGHT
94% Polyester, 6% Elastane treated with Bionic-Finish® Eco (3 layer softshell jacket)
320g/m²

PACKING
Pack 1/ Carton 12

410M MEN'S BIONIC SOFTSHELL JACKET

- SIZES XS-4XL
- » High performance DWR fabric with hydrophobic membrane
 - » Treated with Bionic-Finish® Eco
 - » Fluorine and PFC free
 - » Contrasting zips and accents for a refined look

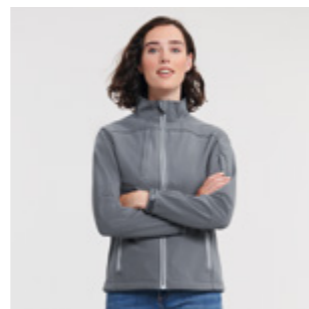
- » High moisture vapour transfer with hydroshell air panels at armpits for enhanced movement and breathability



410F LADIES' BIONIC SOFTSHELL JACKET

- SIZES XS-4XL
- » High performance DWR fabric with hydrophobic membrane
 - » Treated with Bionic-Finish® Eco
 - » Fluorine and PFC free
 - » Contrasting zips and accents for a refined look

- » High moisture vapour transfer with hydroshell air panels at armpits for enhanced movement and breathability



410M



410F

SOFTSHELL JACKET & GILET

140-141



Breathable
up to 5000g/m² per 24 hours

Windproof

Waterproof material
up to 5000mm

MATERIAL / WEIGHT
92% Polyester, 8% Elastane (3 layer Softshell fabric)
340g/m²

PACKING
Pack 1/ Carton 12

140M MEN'S SOFTSHELL JACKET

- SIZES XS-4XL
- » Three layers softshell material
 - » Side pockets and chest pocket with inner lining, inside-out zippers and cord pulls
 - » Full zip with inner storm flap and zip neck protector at collar

- » Drop tail
- » Bungee cord in hem
- » Adjustable cuffs



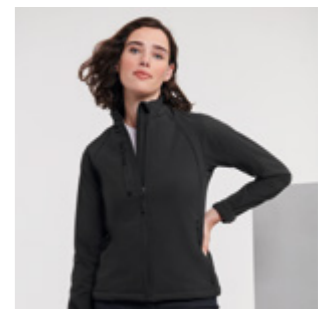
3XL & 4XL only available in Black, Classic Red, French Navy, Titanium, Bottle Green



140F LADIES' SOFTSHELL JACKET

- SIZES XS-4XL
- » Three layers softshell material
 - » Side pockets and chest pocket with inner lining, inside-out zippers and cord pulls
 - » Full zip with inner storm flap and zip neck protector at collar

- » Drop tail
- » Bungee cord in hem
- » Adjustable cuffs
- » Feminine Fit



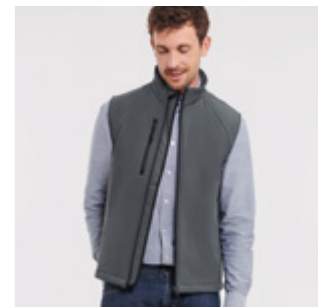
3XL & 4XL only available in Black, Classic Red, French Navy, Titanium, Bottle Green



141M MEN'S SOFTSHELL GILET

- SIZES XS-2XL
- » Three layers softshell material
 - » Side pockets and chest pocket with inner lining, inside-out zippers and cord pulls
 - » Full zip with inner storm flap and zip neck protector at collar

- » Drop tail
- » Bungee cord in hem
- » Adjustable cuffs





The Essential Softshell Jacket is a 2-layer softshell jacket with great environmentally conscious features!

The outer face material is made from 94% recycled polyester and 6% elastane, and the fleece lining is 100% recycled polyester.

The jacket is treated with a fluorine-free and PFC-free finish from the Bionic-Finish-Eco® brand.

ESSENTIAL SOFTSHELL JACKET

420



MATERIAL / WEIGHT
94% Polyester (recycled), 6% Elastane
290 g/m²

PACKING
Pack 1/ Carton 12



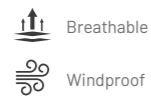
420M ESSENTIAL SOFTSHELL JACKET SIZES XS-3XL

- » Classic Fit
- » Bonded 2-layer softshell material with water-repellent Bionic Eco Finish® treatment (fluorine and PFC-free)
- » Outer face material and inner fleece lining made from recycled polyester
- » Cadet collar
- » Storm flap
- » Side pockets



SMART SOFTSHELL JACKET & GILET

040-041



MATERIAL / WEIGHT

100% Polyester Knitted Softshell Outer Layer, Bonded Microfleece Inner Layer
315g/m²

PACKING

Pack 1/ Carton 12

Teflon® is a registered trademark of Du Pont used under license by INVISTA and its affiliates.

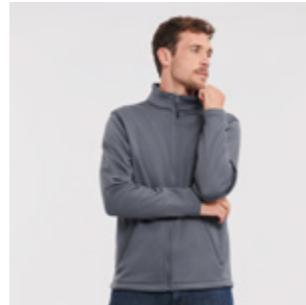


040M MEN'S SMART SOFTSHELL JACKET

SIZES XS-3XL

- » Durable Water Repellent Du Pont™ Teflon® Coating
- » Two layer softshell material without membrane
- » 2 zipped pockets
- » Inside-out zippers
- » Cadet collar

- » Drop tail
- » Protection against wind and chill
- » Higher degree of breathability
- » Microfleece lining
- » Back neck tape
- » Bound inside seams on zip
- » Headphone access



040F LADIES' SMART SOFTSHELL JACKET

SIZES XS-3XL

- » Durable Water Repellent Du Pont™ Teflon® Coating
- » Two layer softshell material without membrane
- » 2 zipped pockets
- » Inside-out zippers
- » Cadet collar

- » Drop tail
- » Protection against wind and chill
- » Higher degree of breathability
- » Microfleece lining
- » Back neck tape
- » Bound inside seams on zip
- » Headphone access

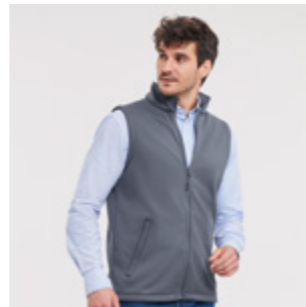


041M MEN'S SMART SOFTSHELL GILET

SIZES XS-3XL

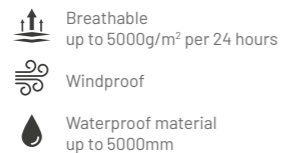
- » Durable Water Repellent Du Pont™ Teflon® Coating
- » Two layer softshell material without membrane
- » 2 zipped pockets
- » Inside-out zippers
- » Cadet collar

- » Drop tail
- » Protection against wind and chill
- » Higher degree of breathability
- » Microfleece lining
- » Back neck tape
- » Bound inside seams on zip
- » Headphone access



SPORTSHELL 5000 JACKET

520



MATERIAL / WEIGHT

100% polyester outer, 100% polyester mesh, Advanced Softshell Fabric with Natural Stretch (3 layer bonded hydrophobic substrate)
250g/m²

PACKING

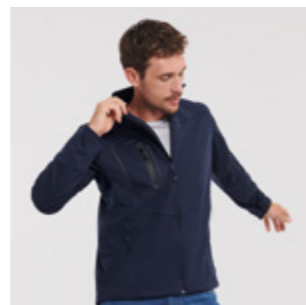
Pack 1/ Carton 12

520M MEN'S SPORTSHELL 5000 JACKET

SIZES XS-2XL

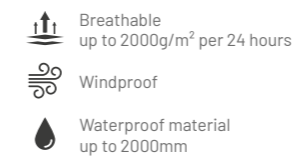
- » Designed for active living: laser cut pockets with matt waterproof zips on sleeve and chest
- » Adjustable cuffs for comfort and maintenance of personal microclimate; YKK centre zipper

- » Ergonomic shape - body fit creates microclimate for maximum thermoregulation and moisture transfer
- » Discreet decoration access at inner left chest



HYDRAPLUS 2000 JACKET

510



MATERIAL / WEIGHT

100% Nylon Taslan
190g/m²

PACKING

Pack 1/ Carton 12

510M MEN'S HYDRAPLUS 2000 JACKET

SIZES XS-4XL

- » Active fit with articulated elbows and raglan sleeves
- » Inside-out YKK front zipper with cord pull; double storm flap with additional hook and loop fastener closure

- » Stowaway 3 piece hood and microfleece inner collar
- » Fully lined, with discreet concealed decoration access at hem, bungee cord in hem



3XL & 4XL only available in Black, Classic Red, French Navy and Titanium





YOUR TRUSTED WORKMATE

Made for extra durability and practicality, Russell Workwear is a valuable tool for any hands-on team!



HEAVY DUTY WORKWEAR T

010



MATERIAL / WEIGHT
100% Combed Ringspun Cotton
Light Oxford: 93% Cotton, 7% Viscose
180g/m²

PACKING
Pack 3/ Carton 36

010M HEAVY DUTY WORKWEAR T

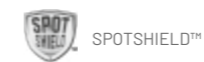
SIZES XS-4XL

- » Classic Fit
- » Single Jersey
- » Double layered shoulder panels and reinforced twin needle stitching at armhole
- » 1x1 rib knit collar with top stitch
- » Double layer yoke, perfect for decoration
- » Enzyme washed ringspun cotton for a softer feel and added comfort



HEAVY DUTY COLLAR & CREW NECK WORKWEAR SWEATSHIRTS

012-013



MATERIAL / WEIGHT
80% Combed Ringspun Cotton,
20% Polyester
300g/m²

PACKING
Pack 3/ Carton 24

012M HEAVY DUTY WORKWEAR COLLAR SWEATSHIRT

SIZES XS-4XL

- » SpotShield™ stain resistant coating
- » Double layered shoulder panels for superior comfort and stability
- » Locker patch for personalisation
- » Elasticated pen holder on top sleeve
- » Plastic-coated metal buttons
- » Drop tail and compact 1x1 ribbed hem for perfect bottom fit and protection against wind and chill
- » Side darts for better fit and flexibility



013M HEAVY DUTY WORKWEAR SWEATSHIRT

SIZES XS-4XL

- » SpotShield™ stain resistant coating
- » Double layered shoulder panels for superior comfort and stability
- » Locker patch for personalisation
- » Elasticated pen holder on top sleeve
- » Drop tail and compact 1x1 ribbed hem for perfect bottom fit and protection against wind and chill
- » Side darts for better fit and flexibility



WORKWEAR POLYCOTTON TWILL TROUSERS & SHORTS

001-002



Teflon® is a registered trademark of Du Pont used under license by INVISTA and its affiliates.

MATERIAL / WEIGHT
65% Polyester, 35% Cotton Twill
245g/m²

PACKING
Pack 1/ Carton 12

001M WORKWEAR POLYCOTTON TWILL TROUSERS

- » 2 back pockets with flaps
- » Cargo pocket on right leg
- » Small extra pocket below waistband
- » Expandable waistband for comfortable fit

WAIST SIZES
UK (inches): 28/30/32/34/36/38/40/42/44/46/48
Europe: 44/46/48/50/52/54/56/58/60/62/64

LEG LENGTH
Ins R32/L:34,
cm R81/L:86



002M WORKWEAR POLYCOTTON TWILL SHORTS

- » 2 back pockets with flaps
- » Cargo pocket on right leg
- » Small extra pocket below waistband
- » Expandable waistband for comfortable fit

WAIST SIZES
UK (inches): 28/30/32/34/36/38/40/42/44/46/48
Europe: 44/46/48/50/52/54/56/58/60/62/64



HEAVY DUTY WORKWEAR TROUSERS

015



Teflon® is a registered trademark of Du Pont used under license by INVISTA and its affiliates.

MATERIAL / WEIGHT
65% Polyester, 35% Cotton
Hardwearing Canvas
260g/m²

PACKING
Pack 1/ Carton 12

015M HEAVY DUTY WORKWEAR TROUSERS

- » Teflon® fabric protector
- » 2 back pockets, one open, one with flap and hook and loop fastener
- » Cargo pockets on both legs, with practical compartments on right leg
- » Small extra pocket below waistband
- » Triple stitched inner leg seams and pocket openings triple, reinforced seat area
- » Internal pockets for knee pads (21cm x 15cm max.)
- » YKK zipper



WAIST SIZES
UK (inches): 28/30/32/34/36/38/40/42/44/46/48
Europe: 44/46/48/50/52/54/56/58/60/62/64

LEG LENGTH
Ins S:30/R32/L:34
cm S:76/R81/L:86



HEAVY DUTY WORKWEAR GILET

014



Teflon® is a registered trademark of Du Pont used under license by INVISTA and its affiliates.

MATERIAL / WEIGHT
65% Polyester, 35% Cotton Hardwearing
Canvas with 5oz Polyester Wadding, 100%
Polyester Inner Lining
260g/m²

PACKING
Pack 1/ Carton 12


014M HEAVY DUTY WORKWEAR GILET SIZES XS-4XL

- » Teflon® fabric protector
- » Full zip with stormflap, flexi notch at neck
- » Drop Tail, elasticated gusset at armhole, reinforced hang tag
- » Right hand side chest pocket with functional multi compartments
- » Spacious, discreet zipped decoration access at left chest




013M

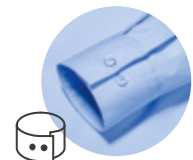
CUFF STYLES & COLLARS




ROUNDED EDGE CUFFS
Adjustable with 2 buttons.



KENT
Perfect for business, this classic collar is named after the Duke of Kent.




SQUARE EDGE CUFFS
Adjustable with 2 buttons.



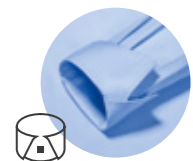
NEW KENT
Not as wide-flared as the Cutaway or as sharp-cut as the Kent collar, this modern style is stiffened, boned and suitable for embroidery.




MITRED EDGE CUFFS
Adjustable with 2 buttons.



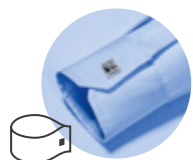
BUTTON DOWN
The modern sporty buttoned-down collar gives a smart appearance without a tie.




COCKTAIL CUFFS
These can be worn either turned or not turned, for a stylish look.



UNDER BUTTON DOWN
This type of collar is ideal for wearing without a tie and with an open collar button.



















CUFF LINKS
Many shirts offer the option to wear cuff links.



LADIES
Our Ladies' Shirts feature a classic collar distinguished in style by its length and shape.

CARE SYMBOLS

							
30°C machine wash gentle cycle	30°C machine wash	40°C machine wash gentle cycle	40°C machine wash	50°C machine wash gentle cycle	50°C machine wash	60°C machine wash	No softeners
							
Do not tumble dry	Tumble dry at low temperature	Do not iron	Iron at low temperature	Iron at medium temperature	Do not bleach	Do not dry clean	Dry clean, any solvent except trichloroethylene

FEATURES & FUNCTIONS



BREATHABLE

A material's breathability is measured in terms of how many grams of water vapour pass through a square meter of fabric over 24 hours (g/m²/24h). The higher the value, the more breathable the product.



WATERPROOF

The water column test indicates how many millimetres of water a fabric can withstand before the pressure causes it to leak. Measurements above 1,500 mm are considered waterproof.



EASY CARE

A special finish ensures that the shirts and blouses are easier and quicker to iron.



SPOT SHIELD™

Fabrics with a SpotShield™ finish are resistant to water and dirt. They even repel most oils without difficulty.



BIONIC-FINISH® ECO

The fluorine- and PFC-free finish prevents water and dirt from sticking to the material.



TEFLON® (DUPONT™)

Teflon® coatings ensure that fabrics are resistant to water, oil and dirt. What's more, this does not have any negative impact on the weight, look, colour or breathability.



LYCRA®

LYCRA® is a brand name from the company Invista. It is an extremely stretchy elastane fibre with outstanding rebound properties. These textiles promise an improved fit and comfort to match.



LYCRA® T400®

This elastomultiester (LYCRA® T400®) is a modern double fibre material that can be stretched in all directions and then bounces back to its original shape. The high-quality material adapts to the movements of the wearer and always retains its shape.



AQUAPEL™ BY NANOTEX®

Developed in order to offer reliable protection against wind and water, Aquapel™ is still breathable and at the same time features environmentally friendly fluorine- and PFC-free technology.



DUPONT™ SORONA®

The sustainable insulation with renewable plant-based materials is made with reduced energy consumption and 50% less greenhouse gas emissions.



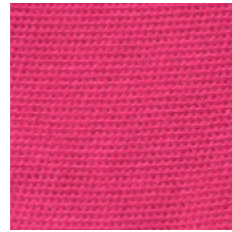
FLUOR- AND PFC-FREE

Fluorine- and PFC-free materials are more degradable, for the good of both us and the environment.



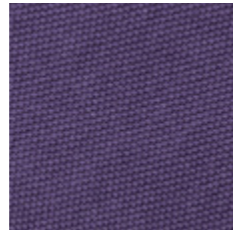
PR POWDER ROSE

PANTONE® FABRIC: 13-1504 TPX
PANTONE® PAPER: 5035 C
C:11 M:26 Y:19 K: 0



57 FUCHSIA

PANTONE® FABRIC: 18-1856 TPX
PANTONE® PAPER: 1935 C
C:0 M:100 Y:7 K:0



81 PURPLE

PANTONE® FABRIC: 19-3737 TPX
PANTONE® PAPER: 7447 C
C:90 M:100 Y:30 K:15



PT PORT

PANTONE® FABRIC: 19-1726 TPX
PANTONE® PAPER: 7428 C
C:10 M:95 Y:43 K:73



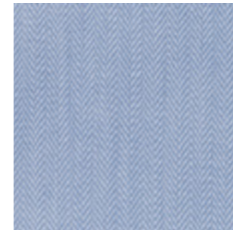
41 BURGUNDY

PANTONE® FABRIC: 19-1716 TPX
PANTONE® PAPER: 5195 C
C:50 M:100 Y:70 K:45



BZ BRIGHT SKY

PANTONE® FABRIC: 14-4112 TPX
PANTONE® PAPER: 2708 C
C:15 M:5 Y:0 K:0



42 LIGHT BLUE

PANTONE® FABRIC: 14-4110 TPX
PANTONE® PAPER: 2708 C
C:30 M:14 Y:0 K:0



00 OXFORD BLUE

PANTONE® FABRIC: 14-4214 TPX
PANTONE® PAPER: 644 C
C:35 M:17 Y:0 K:0



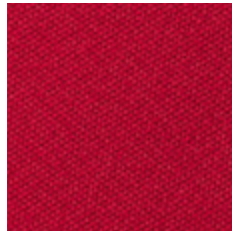
SC SKY

PANTONE® FABRIC: 15-4020 TPX
PANTONE® PAPER: 651 C
C:48 M:22 Y:0 K:0



HK MINERAL BLUE

PANTONE® FABRIC: 17-4021 TPX
PANTONE® PAPER: 535 C
C:47 M:28 Y:11 K:4



CR CLASSIC RED

PANTONE® FABRIC: 19-1764 TPX
PANTONE® PAPER: 1945 C
C:0 M:100 Y:80 K:25



BR BRIGHT RED

PANTONE® FABRIC: 18-1662 TPX
PANTONE® PAPER: 1797 C
C:0 M:100 Y:100 K:0



44 ORANGE

PANTONE® FABRIC: 17-1464 TPX
PANTONE® PAPER: 1665 C
C:0 M:77 Y:100 K:0



PD PURE GOLD

PANTONE® FABRIC: 14-1064 TPX
PANTONE® PAPER: 137 C
C:0 M:29 Y:92 K:0



K2 YELLOW

PANTONE® FABRIC: 13-0746 TPX
PANTONE® PAPER: 129 C
C:0 M:0 Y:80 K:0



CP CORPORATE BLUE

PANTONE® FABRIC: 16-4021 TPX
PANTONE® PAPER: 652 C
C:60 M:35 Y:0 K:5



ZU AZURE BLUE

PANTONE® FABRIC: 18-4141 TPX
PANTONE® PAPER: 660 C
C:100 M:53 Y:0 K:3



BH BRIGHT ROYAL

PANTONE® FABRIC: 18-3949 TPX
PANTONE® PAPER: 2726 C
C:100 M:70 Y:0 K:5



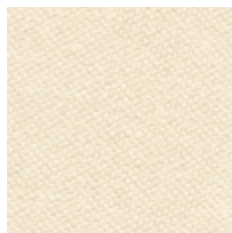
IB INDIGO BLUE

PANTONE® FABRIC: 19-4026 TPX
PANTONE® PAPER: 2378 C
C:86 M:56 Y:13 K:35



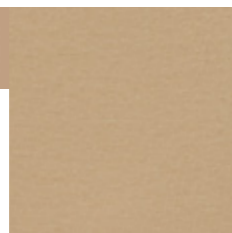
PB PETROL BLUE

PANTONE® FABRIC: 19-4324 TPX
PANTONE® PAPER: 4160 C
C:100 M:25 Y:0 K:62



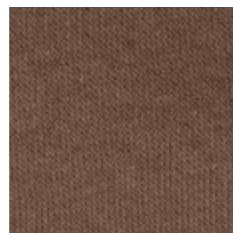
60 NATURAL

PANTONE® FABRIC: 11-0606-TCX
PANTONE® PAPER: 9224 C
C:4 M:9 Y:25 K:0



KT TAN

PANTONE® FABRIC: 15-1114 TCX
PANTONE® PAPER: 2312 C
C:29 M:38 Y:50 K:1



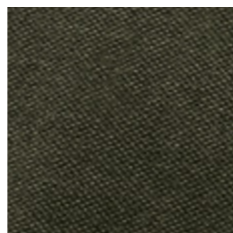
HJ MOCHA

PANTONE® FABRIC: 18-1017 TPX
PANTONE® PAPER: 4272 C
C:40 M:47 Y:59 K:37



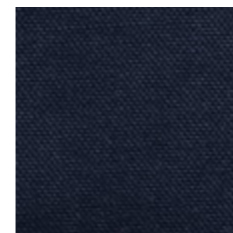
CO CHOCOLATE

PANTONE® FABRIC: 17-0812 TPX
PANTONE® PAPER: 439 C
C:0 M:11 Y:17 K:75



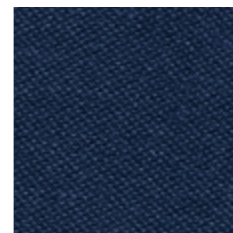
00 DARK OLIVE

PANTONE® FABRIC: 19-0511 TCX
PANTONE® PAPER: 418 C
C:61 M:51 Y:64 K:32



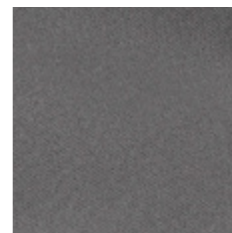
NB BRIGHT NAVY

PANTONE® FABRIC: 19-3921 TPX
PANTONE® PAPER: 2380 C
C:91 M:71 Y:36 K:56



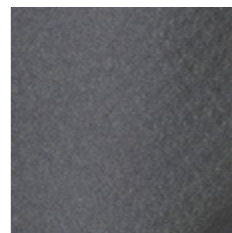
FN FRENCH NAVY

PANTONE® FABRIC: 19-4010 TPX
PANTONE® PAPER: 532 C
C:100 M:85 Y:35 K:55



TT TITANIUM

PANTONE® FABRIC: 19-3906 TPX
PANTONE® PAPER: COOL GREY 11 C
C:35 M:5 Y:0 K:85



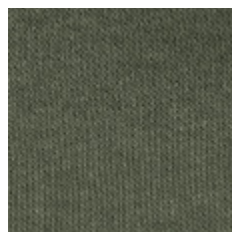
IR IRON GREY

PANTONE® FABRIC: 18-4214 TPX
PANTONE® PAPER: 431 C
C:45 M:25 Y:16 K:59



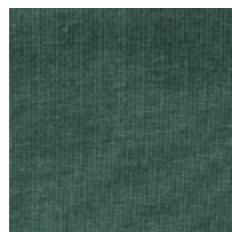
CH CHARCOAL MARL

PANTONE® FABRIC: 19-4023 TPX
PANTONE® PAPER: 432 C
C:65 M:43 Y:26 K:78



BP OLIVE

PANTONE® FABRIC: 19-0309 TPX
PANTONE® PAPER: 418 C
C:65 M:41 Y:60 K:48



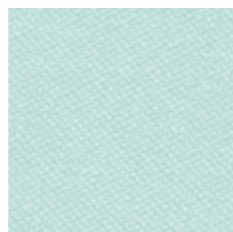
38 BOTTLE GREEN

PANTONE® FABRIC: 19-5513 TPX
PANTONE® PAPER: 5477 C
C:100 M:50 Y:80 K:45



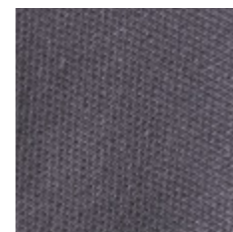
WL WINTER EMERALD

PANTONE® FABRIC: 17-5034 TPX
PANTONE® PAPER: 569 C
C:100 M:0 Y:50 K:10



A0 AQUA

PANTONE® FABRIC: 14-4809-TCX
PANTONE® PAPER: P 124-11C
C:38 M:0 Y:16 K:5



CG CONVOY GREY

PANTONE® FABRIC: 17-4405 TPX
PANTONE® PAPER: 444 C
C:18 M:5 Y:0 K:71



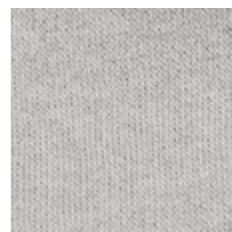
SI SILVER

PANTONE® FABRIC: 17-0000 TPX
PANTONE® PAPER: 877 C
C:0 M:0 Y:0 K:60



BK STONE

PANTONE® FABRIC: 15-4101 TPX
PANTONE® PAPER: 421 C
C:13 M:8 Y:11 K:26



UG URBAN GREY

PANTONE® FABRIC: 13-4303 TPX
PANTONE® PAPER: COOL GREY 2 C
C:22 M:15 Y:16 K:0



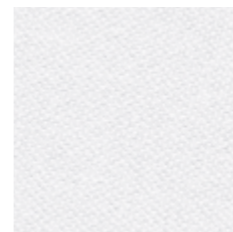
SH SPORT HEATHER

PANTONE® FABRIC: 18-4005 (MARLED)
PANTONE® PAPER: 424 C
C:2 M:2 Y:0 K:56



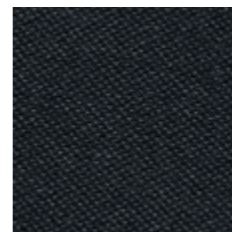
LX LIGHT OXFORD

PANTONE® FABRIC: 14-4002 (MARLED)
PANTONE® PAPER: COOL GREY 3C
C:5 M:0 Y:0 K:40



30 WHITE

PANTONE® FABRIC: 11-0601 TPX
PANTONE® PAPER: 7541 C
C:0 M:0 Y:0 K:0



36 BLACK

PANTONE® FABRIC: 19-4005 TPX
PANTONE® PAPER: BLACK C
C:100 M:50 Y:50 K:100



Member of amfori, the leading global business association for open and sustainable trade. We participate in amfori BSCI. For more information visit www.amfori.org

SIZE GUIDE

All of our measurements are based on actual "to fit" body sizes rather than the size of the garment itself.

For example, a polo shirt with a chest to fit size of 92-97cm / 36-38" will fit someone with this chest measurement; trousers with a waist to fit 50 Europe / 34", will fit a person with this measurement.

Here are some tips to help you choose the most appropriate garment size(s):

1

CHEST

Men: Measure around the fullest part of the chest, 2.5cm below the underarm.
Women: Measure around the fullest part of the bust.

2

COLLAR

Men: Measure around the base of the neck.

3

WAIST

All: Measure around the natural waist, keeping the measuring tape taut.

4

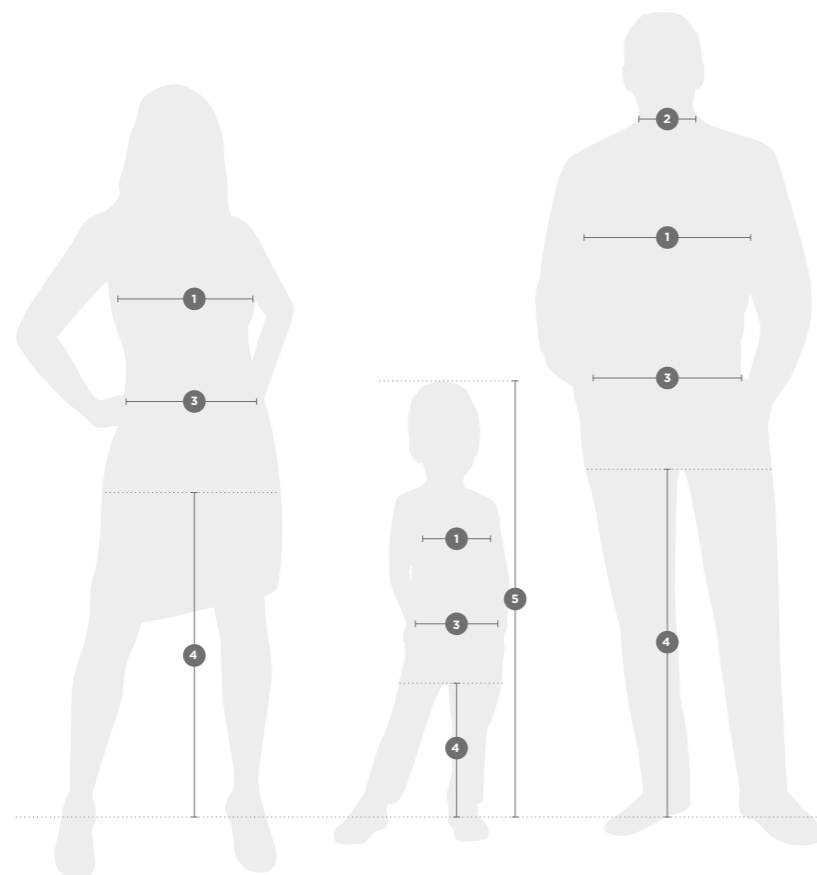
LEG LENGTH

All: Measure from the top of the inside leg at the crotch down to where the trousers are normally worn with shoes.

5

HEIGHT

Kids: Standing still with feet together and flat on the floor, measure from the top of the head to the ground.



ALL PRODUCTS (excluding shirts, trousers, shorts & sweat pants)

LADIES'	XXS	XS	S	M	L	XL	2XL	3XL	4XL	5XL	6XL
DRESS SIZE											
UK	6	8	10	12	14	16	18	20	22	24	26
FRANCE	34	36	38	40	42	44	46	48	50	52	54
ITALY	38	40	42	44	46	48	50	52	54	56	58
GERMANY/EUROPE	32	34	36	38	40	42	44	46	48	50	52
CHEST TO FIT (CM)	72-77	77-82	82-87	87-92	92-97	97-102	102-107	107-112	112-117	117-122	122-127
CHEST TO FIT (INS)	28-30	30-32	32-34	34-36	36-38	38-40	40-42	42-44	44-46	46-48	48-50

MEN'S	XXS	XS	S	M	L	XL	2XL	3XL	4XL	5XL	6XL
DRESS SIZE											
GERMANY/EUROPE	44	46	48	50	52	54-56	56-58	58-60	62-64	66-68	70-72
CHEST TO FIT (CM)	82-87	87-92	92-97	97-102	102-107	107-112	112-117	117-122	122-127	127-132	132-137
CHEST TO FIT (INS)	32-34	34-36	36-38	38-40	40-42	42-44	44-46	46-48	48-50	50-52	52-54

SHIRTS

LADIES'	XXS	XS	S	M	L	XL	2XL	3XL	4XL	5XL	6XL
DRESS SIZE											
UK	6	8	10	12	14	16	18	20	22	24	26
FRANCE	34	36	38	40	42	44	46	48	50	52	54
ITALY	38	40	42	44	46	48	50	52	54	56	58
GERMANY/EUROPE	32	34	36	38	40	42	44	46	48	50	52
CHEST TO FIT (CM)	72-77	77-82	82-87	87-92	92-97	97-104	104-112	112-120	120-130	130-137	137-144
CHEST TO FIT (INS)	28-30	30-32	32-34	34-36	36-38	38-41	41-44	44-47	47-51	51-54	54-57

MEN'S	S	M	L	XL	2XL	3XL	4XL	5XL	6XL				
DRESS SIZE													
COLLAR TO FIT (CM)	37-38	39-40	41-42	43-44	45-46	47-48	49-50	51-52	53-54				
DUAL COLLAR SIZES (INS)	14.5/15	15.5	16/16.5	17/17.5	18	18.5/19	19.5	20	21				
INDIVIDUAL COLLAR SIZES (INS)	14.5	15	15.5	16	16.5	17	17.5	18	18.5	19	19.5	20	21
CHEST TO FIT (CM)	92-97	97-102	102-107	107-112	112-117	117-122	122-127	127-132	132-137				
CHEST TO FIT (INS)	36-38	38-40	40-42	42-44	44-46	46-48	48-50	50-52	52-54				

TROUSERS

UK (INS)	28	30	32	34	36	38	40	42	44	46	48
EUROPE	44	46	48	50	52	54	56	58	60	62	64

	SHORT	REGULAR	LONG
LEG LENGTH (CM)	76	81	86
LEG LENGTH (INS)	30	32	34

SWEAT PANTS

LADIES'	XS	S	M	L	XL
DRESS SIZE					
UK	8	10	12	14	16
WAIST TO FIT (CM)	63.5	68.5	74	79	84
WAIST TO FIT (INS)	25	27	29	31	33

MEN'S	XS	S	M	L	XL	2XL	3XL
DRESS SIZE							
WAIST TO FIT (CM)	71	76	81	86.5	91.5	96.5	101.5
WAIST TO FIT (INS)	28	30	32	34	36	38	40

ALL KIDS PRODUCTS (excluding sweat pants)

AGES (YEARS)	1-2	3-4	5-6	7-8	9-10	11-12	13-14	15-16
HEIGHT (CM)	90	104	116	128	140	152	164	176
CHEST TO FIT (CM)	51-56	56-63	63-71	71-76	76-81	81-86	86-91	91-96
CHEST TO FIT (INS)	20-22	22-25	25-28	28-30	30-32	32-34	34-36	36-38

SWEAT PANTS (kids)

AGES (YEARS)	3-4	5-6	7-8	9-10	11-12
HEIGHT (CM)	104	116	128	140	152
WAIST TO FIT (CM)	47	50	53	56	62
WAIST TO FIT (INS)	18.5	20	21	22	24.5

RUSSELL COLLECTION - KNITWEAR

PRODUCT CODE	PAGE	PRODUCT NAME	SIZES	PACKS / CARTONS	BLACK 36	CHARCOAL MARL CM	FRENCH NAVY FN
V-NECK KNITTED PULLOVER	52	50% COTTON, 50% ACRYLIC COTTONBLEND / 275 G/M ²					
710M	52	MEN'S V-NECK KNITTED PULLOVER	XXS-4XL	1/12			
710F	52	LADIES' V-NECK KNITTED PULLOVER	XXS-4XL	1/12			
V-NECK KNITTED CARDIGAN	52	50% COTTON, 50% ACRYLIC COTTONBLEND / 275 G/M ²					
715F	52	LADIES' V-NECK KNITTED CARDIGAN	XXS-4XL	1/12			
V-NECK SLEEVELESS KNITTED PULLOVER	53	50% COTTON, 50% ACRYLIC COTTONBLEND / 275 G/M ²					
716M	53	V-NECK SLEEVELESS KNITTED PULLOVER	XXS-4XL	1/12			

RUSSELL COLLECTION - SHIRTS

PRODUCT CODE	PAGE	PRODUCT NAME	SIZES	PACKS / CARTONS	WHITE 30	BLACK 36	BOTTLE GREEN 38	LIGHT BLUE 42	BRIGHT ROYAL BH	BRIGHT SKY BZ	CONVOY GREY CG	CLASSIC RED CR	CORPORATE BLUE CP	CHOCOLATE C0	DENIM MARL D2	FRENCH NAVY FN	OXFORD BLUE OD	PORT PT	SILVER SI	BRIGHT NAVY NB	WHITE / CONVOY GREY W4	LIGHT BLUE / MID BLUE / BRIGHT NAVY LB
POLYCOTTON POPLIN SHIRT	39	65% POLYESTER, 35% COTTON POPLIN / WHITE: 110 G/M ² , COLOURS: 105 G/M ²																				
934M	39	MEN'S LONG SLEEVE CLASSIC POLYCOTTON POPLIN SHIRT	S-4XL	1/12																		
934F	39	LADIES' LONG SLEEVE CLASSIC POLYCOTTON POPLIN SHIRT	XS-4XL	1/12																		
935M	39	MEN'S SHORT SLEEVE CLASSIC POLYCOTTON POPLIN SHIRT	S-4XL	1/12																		
935F	39	LADIES' SHORT SLEEVE CLASSIC POLYCOTTON POPLIN SHIRT	XS-4XL	1/12																		
924M	40	MEN'S LONG SLEEVE TAILORED POLYCOTTON POPLIN SHIRT	S-4XL	1/12																		
924F	40	LADIES' LONG SLEEVE FITTED POLYCOTTON POPLIN SHIRT	XS-4XL	1/12																		
PURE COTTON POPLIN SHIRT	41	100% COTTON POPLIN / WHITE: 120 G/M ² , COLOURS: 125 G/M ²																				
936M	41	MEN'S LONG SLEEVE CLASSIC PURE COTTON POPLIN SHIRT	S-4XL	1/12																		
936F	41	LADIES' LONG SLEEVE CLASSIC PURE COTTON POPLIN SHIRT	XS-4XL	1/12																		
STRETCH SHIRT	40	97% COTTON, 3% ELASTANE POPLIN / 140 G/M ²																				
946M	40	MEN'S LONG SLEEVE FITTED STRETCH SHIRT	S-4XL	1/12																		
946F	40	LADIES' 3/4 SLEEVE FITTED STRETCH SHIRT	XS-2XL	1/12																		
947M	40	MEN'S SHORT SLEEVE FITTED STRETCH SHIRT	S-4XL	1/12																		
ULTIMATE STRETCH SHIRT	41	75% COTTON, 25% ELASTOMULTIESTER (LYCRA® T400® FIBRE) POPLIN / WHITE: 125 G/M ² , COLOURS: 130 G/M ²																				
960M	41	MEN'S LONG SLEEVE FITTED ULTIMATE STRETCH SHIRT	S-4XL	1/12																		
960F	41	LADIES' LONG SLEEVE FITTED ULTIMATE STRETCH SHIRT	XS-4XL	1/12																		

RUSSELL COLLECTION - SHIRTS

PRODUCT CODE	PAGE	PRODUCT NAME	SIZES	PACKS / CARTONS	WHITE 30	BLACK 36	BOTTLE GREEN 38	LIGHT BLUE 42	BRIGHT ROYAL BH	BRIGHT SKY BZ	CONVOY GREY CG	CLASSIC RED CR	CORPORATE BLUE CP	CHOCOLATE C0	DENIM MARL D2	FRENCH NAVY FN	OXFORD BLUE OD	PORT PT	SILVER SI	BRIGHT NAVY NB	WHITE / CONVOY GREY W4	LIGHT BLUE / MID BLUE / BRIGHT NAVY LB
OXFORD SHIRT	43	70% COTTON, 30% POLYESTER OXFORD / WHITE: 130 G/M ² , COLOURS: 135 G/M ²																				
922M	43	MEN'S LONG SLEEVE TAILORED OXFORD SHIRT	S-4XL	1/12																		
923M	43	MEN'S SHORT SLEEVE TAILORED OXFORD SHIRT	S-4XL	1/12																		
932M	43	MEN'S LONG SLEEVE CLASSIC OXFORD SHIRT	S-6XL	1/12																		
932F	43	LADIES' LONG SLEEVE TAILORED OXFORD SHIRT	XS-6XL	1/12																		
933M	44	MEN'S SHORT SLEEVE CLASSIC OXFORD SHIRT	S-6XL	1/12																		
933F	44	LADIES' SHORT SLEEVE TAILORED OXFORD SHIRT	XS-6XL	1/12																		
ULTIMATE NON-IRON SHIRT	49	100% COTTON MICRO TWILL / 120 G/M ²																				
956M	49	MEN'S LONG SLEEVE CLASSIC ULTIMATE NON-IRON SHIRT	S-4XL	1/12																		
956F	49	LADIES' LONG SLEEVE TAILORED ULTIMATE NON-IRON SHIRT	XS-4XL	1/12																		
957M	49	MEN'S SHORT SLEEVE CLASSIC ULTIMATE NON-IRON SHIRT	S-4XL	1/12																		
957F	49	LADIES' SHORT SLEEVE TAILORED ULTIMATE NON-IRON SHIRT	XS-4XL	1/12																		
958M	49	MEN'S LONG SLEEVE TAILORED ULTIMATE NON-IRON SHIRT	S-4XL	1/12																		
CONTRAST HERRINGBONE SHIRT	47	84% COTTON, 16% POLYESTER HERRINGBONE / WHITE: 125 G/M ² , COLOURS: 130 G/M ²																				
964M	47	MEN'S LONG SLEEVE TAILORED CONTRAST HERRINGBONE SHIRT	S-4XL	1/12																		
HERRINGBONE SHIRT	47	84% COTTON, 16% POLYESTER HERRINGBONE / WHITE: 125 G/M ² , COLOURS: 130 G/M ²																				
962M	47	MEN'S LONG SLEEVE TAILORED HERRINGBONE SHIRT	S-4XL	1/12																		
962F	47	LADIES' LONG SLEEVE TAILORED HERRINGBONE SHIRT	XS-4XL	1/12																		
963M	47	MEN'S SHORT SLEEVE TAILORED HERRINGBONE SHIRT	S-4XL	1/12																		
963F	47	LADIES' SHORT SLEEVE TAILORED HERRINGBONE SHIRT	XS-4XL	1/12																		

FLEECE

PRODUCT CODE	PAGE	PRODUCT NAME	SIZES	PACKS / CARTONS	BLACK 36	BOTTLE GREEN 38	BURGUNDY 41	BRIGHT ROYAL BH	CONVOY GREY CG	CLASSIC RED CR	FRENCH NAVY FN
FULL ZIP OUTDOOR FLEECE	55	100% POLYESTER ANTI-PILL FLEECE / 320 G/M ²									
870M	55	MEN'S FULL ZIP OUTDOOR FLEECE	XS-4XL	3/24							
870F	55	LADIES' FULL ZIP OUTDOOR FLEECE	XS-2XL	3/24							
870B	55	KIDS FULL ZIP OUTDOOR FLEECE	3-12 YEARS	3/24							
OUTDOOR FLEECE GILET	55	100% POLYESTER ANTI-PILL FLEECE / 320 G/M ²									
872M	55	MEN'S OUTDOOR FLEECE GILET	XS-2XL	3/24							
QUARTER ZIP OUTDOOR FLEECE	55	100% POLYESTER ANTI-PILL FLEECE / 320 G/M ²									
874M	55	QUARTER ZIP OUTDOOR FLEECE	XS-2XL	3/24							



©2025 RUSSELL BRANDS, LLC



8302



Sägstraße 6, 82549 Königsdorf
08179/94799-0
info@lerche-werbemittel.de
www.lerche-werbemittel.de